



Engineering & Projects

ENGINEERING BEYOND THE OBVIOUS

Reg No: 2017/263717/07

VAT No: 475 027 8345

Day to Day
Maintenance,
shutdowns
and
breakdowns

Instrumentation

Fabrication
and
installation of
structural Steel
& Platework

Construction
and
Maintenance
work

Mining Supplies –
Bearing, bolts, nuts
etc.

Fabrication and
Repairing of
underground
Vibrator pans.

Pipe Work
Steel Work
Civil Work
Sandblasting

Nothing Is Impossible with God

INTRODUCTION:

GS Engineering and projects has rapidly emerged as a construction and maintenance specialists which is pioneered by black women.

The vibrant team actively anticipates and exceeds customer expectations.

The Company success is underpinned by:

- Safe Work
- Long Term Focus
- Timely and quality delivery
- Entrepreneurial Approach

Our Products and Services:

- Structural Work
- Plate Work
- Day to Day plant maintenance, shutdowns and breakdowns
- Pipe Work
- Mining Supplies (Bolts, Nuts, Bearings etc...)

MECHANICAL WORK

Fabrication and Installation of Structural Steel:

- Gantries
- Fabrication & Repairs on Underground Vibrator Pans
- Platform Transfer Towers
- Pump Repairs e.g Warman Pumps etc...
- Stainless Steel Platework
- Pulley Fabrication and Repairs



PIPE WORK



Fabrication and Installation of Plate Work:

- Chutes
- Hoppers
- Ductings
- Pipe Work
- Pipe Tiling



Day to Day Plant Maintenance:



M350 – Before



M350 – After



ME 35 – Before



ME 35 – After



4/3 D Before



4/3 D After



- Pump Repairs
- Pump Maintenance
- New Pump Supplies





Engineering & Projects
ENGINEERING BEYOND THE OBVIOUS

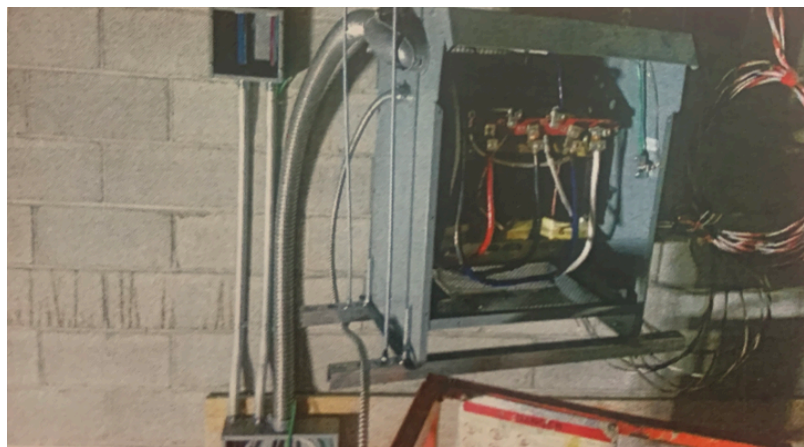
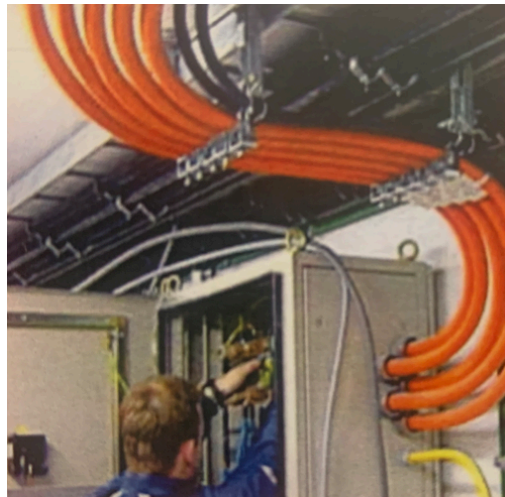
Company Registration Number: 2017/263717/07
VAT Number: 475 027 8345

ISO 9001:2015 compliant

Nothing Is Impossible with God

ELECTRICAL WORK

All electrical work carried out by our fully qualified electricians adheres to the electrical regulatory standard. We offer a range of electrical, internal data and installation services.



Nothing Is Impossible with God

**Electrical
Installations
Condition
monitoring on
Sub-Station
Gearboxes
& Transformers**

**Vibration
Monitoring
Electrical repairs
Lights
replacement**

**Day to Day
Maintenance,
shutdowns and
breakdowns**

**LED Fittings
Wiring & Cable
Sizing**

**Electrical
Supplies General
Electrical
Maintenance**



Address:
No 4 A, Cobalt Street
Zinniaville
Rustenburg

Givmo Moyo
Operations Manager
gisheprojects@gmail.com
info@gsepro.co.za
073 590 1685

Mamokete E Mbewe
Managing Director
gisheprojects@gmail.com
info@gsepro.co.za
071 212 5205

